

CANDOR *Homes*

SINGLE  
STOREY

HOME  
BOOK




# SINGLE STOREY

Find your perfect single storey home and discover the benefits of living on one level.

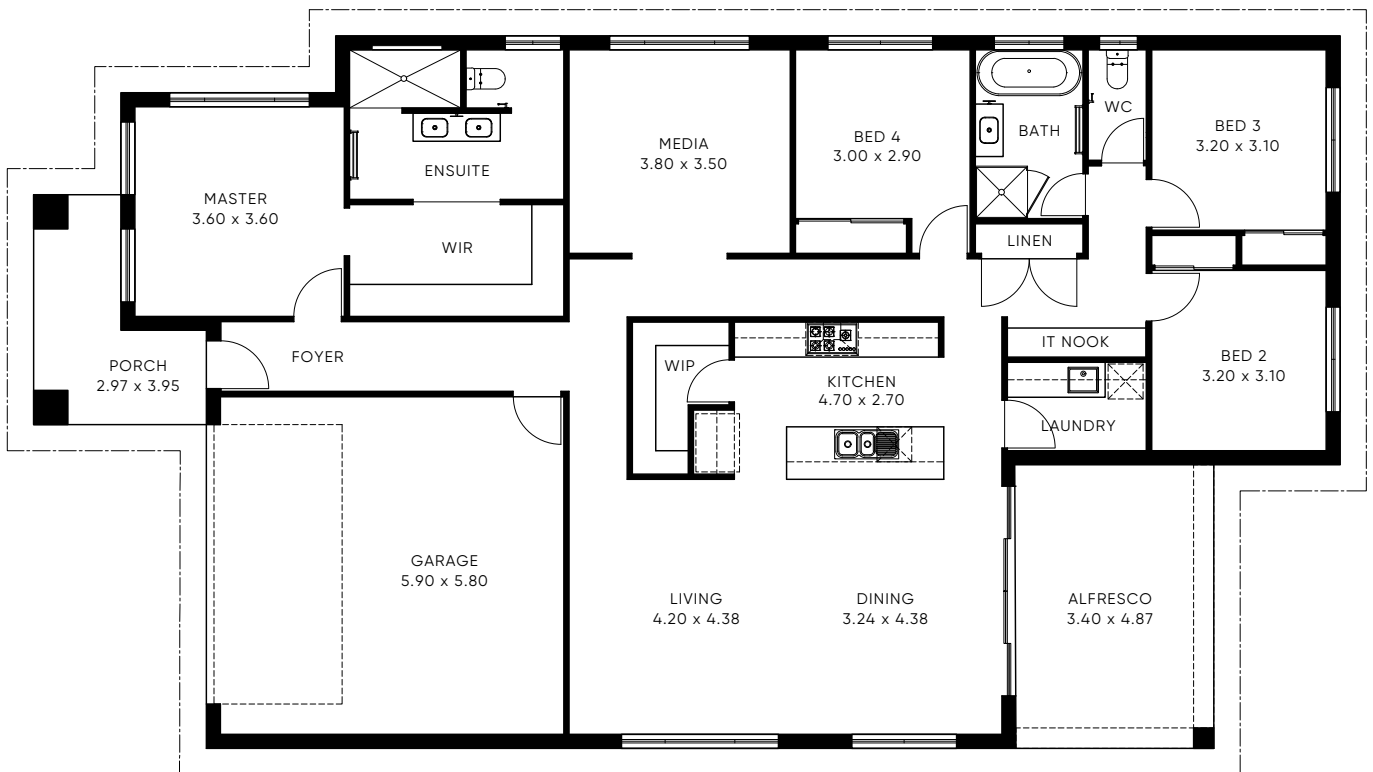
1






# THE OHANA 240

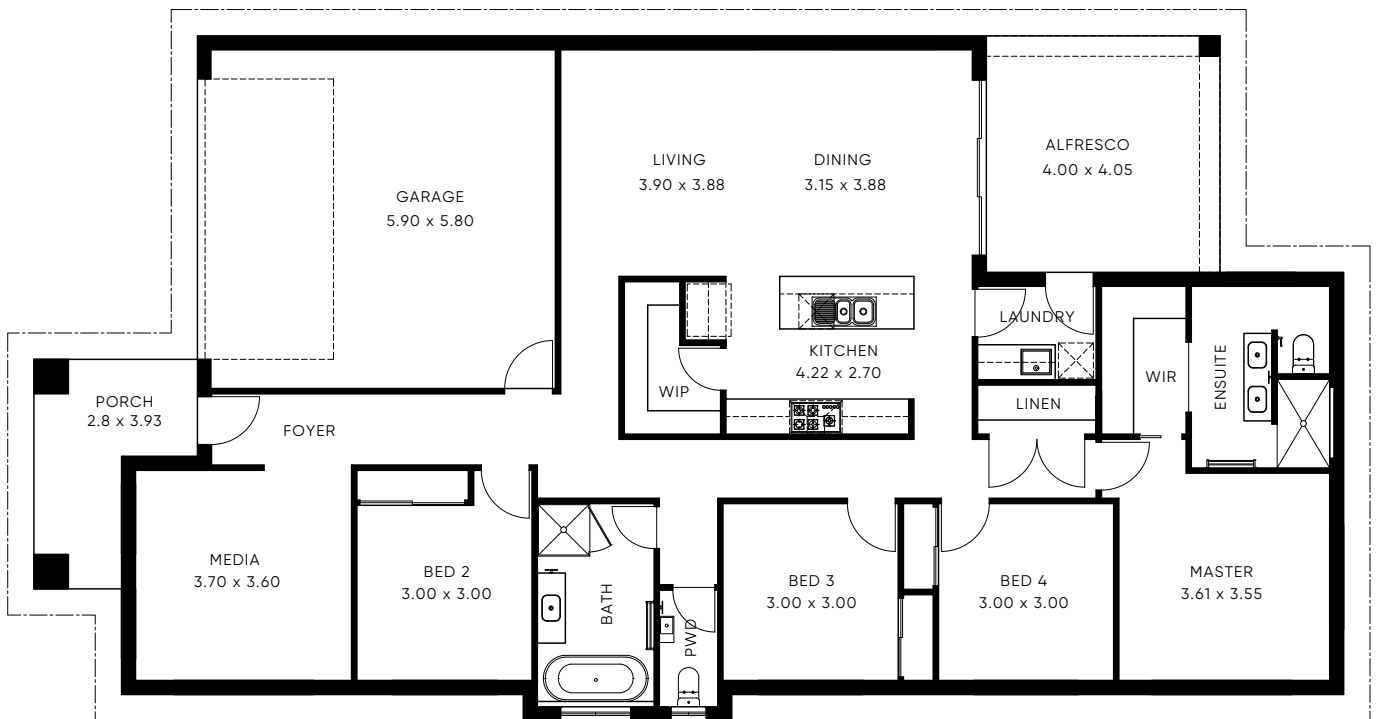
|   |   |   |                |                      |
|---|---|---|----------------|----------------------|
|  4 |  2.5 |  2 | Living Area:   | 177.95m <sup>2</sup> |
| <b>SINGLE STOREY</b>  |   |   | Garage Area:   | 37.09m <sup>2</sup>  |
|   |   |   | Porch Area:    | 8.31m <sup>2</sup>   |
| Minimum Lot Width:  | 14.5m   |   | Alfresco Area: | 16.65m <sup>2</sup>  |
| Minimum Lot Depth:  | 32m   |   | Total Area:    | 240.00m <sup>2</sup> |

ON DISPLAY AT HUNTLEE






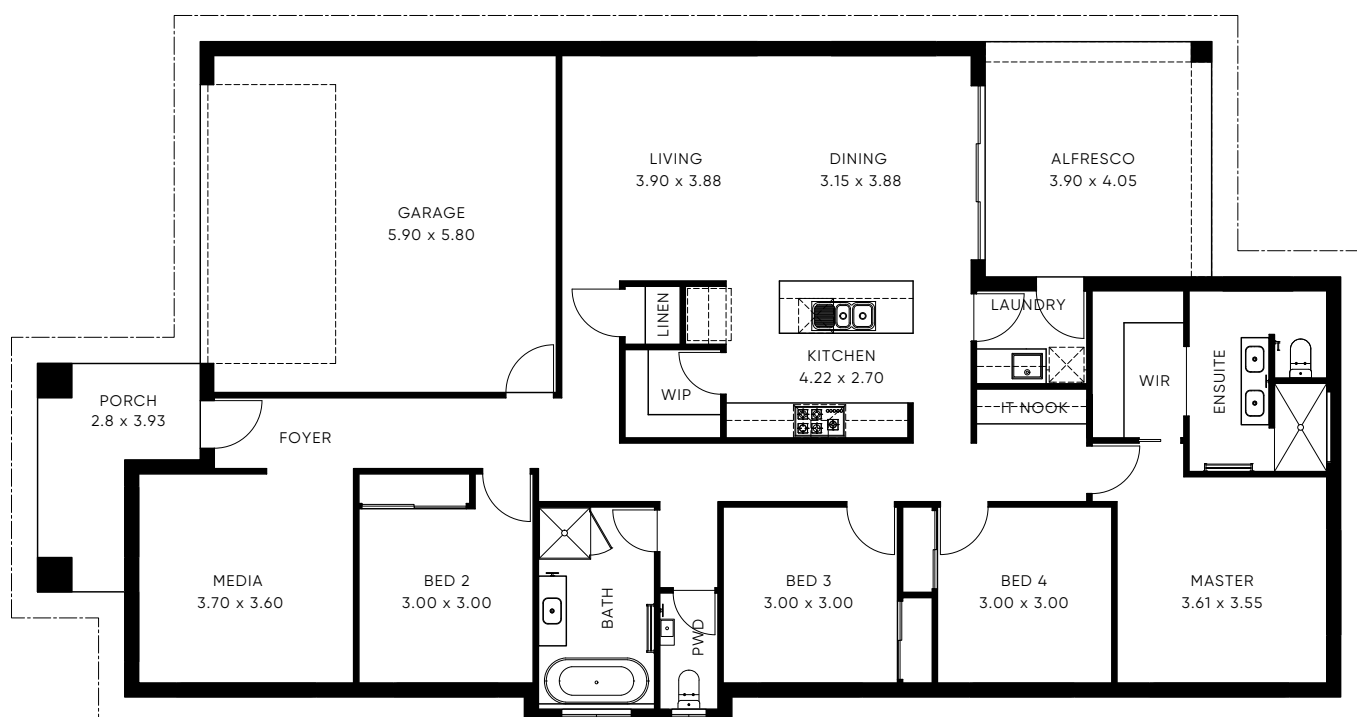
# THE OHANA 227 - 1

|   |   |   |                |                      |
|---|---|---|----------------|----------------------|
|  4 |  2.5 |  2 | Living Area:   | 166.53m <sup>2</sup> |
| <b>SINGLE STOREY</b>  |   |   | Garage Area:   | 37.02m <sup>2</sup>  |
|   |   |   | Porch Area:    | 8.05m <sup>2</sup>   |
| Minimum Lot Width:  | 14m   |   | Alfresco Area: | 15.79m <sup>2</sup>  |
| Minimum Lot Depth:  | 31m   |   | Total Area:    | 227.39m <sup>2</sup> |






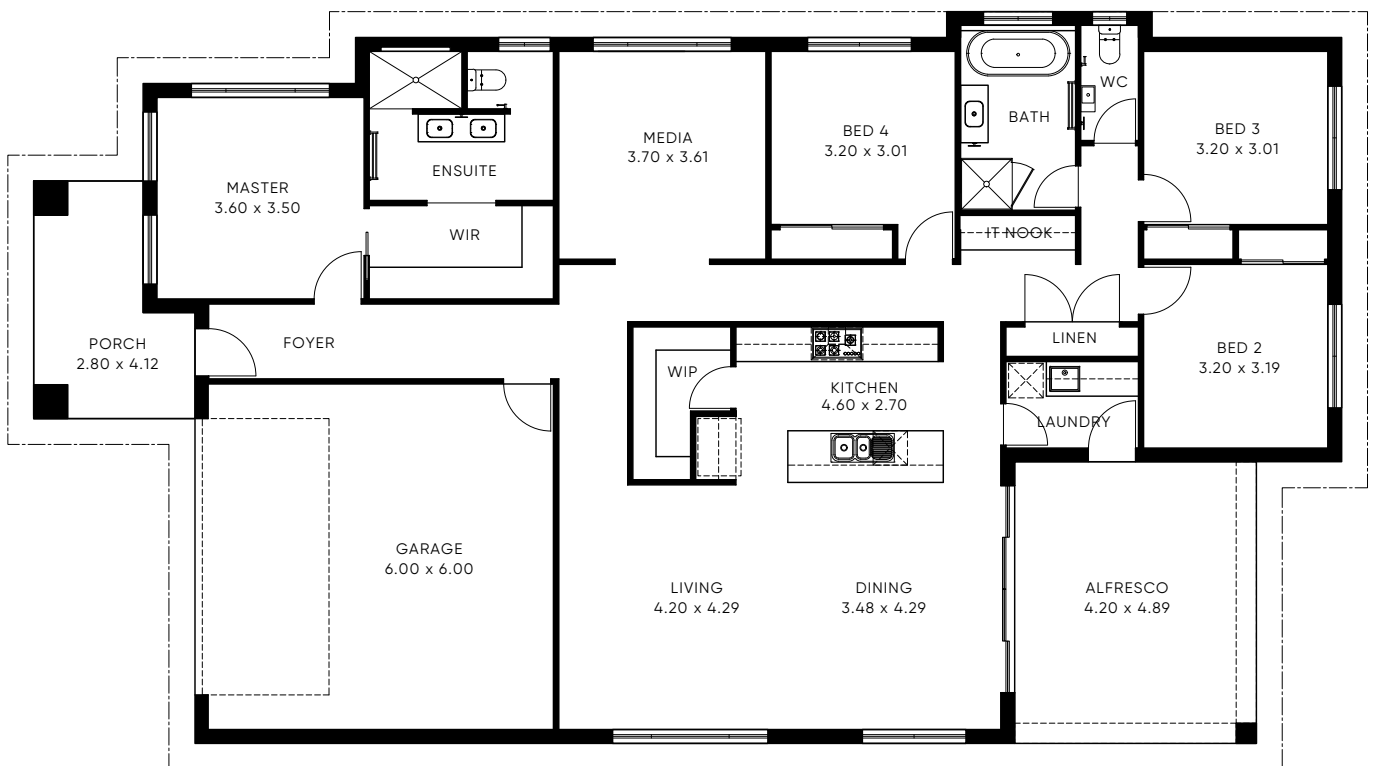
# THE OHANA 227 - 2

|   |   |   |                |                      |
|---|---|---|----------------|----------------------|
|  4 |  2.5 |  2 | Living Area:   | 166.53m <sup>2</sup> |
| <b>SINGLE STOREY</b>  |   |   | Garage Area:   | 37.02m <sup>2</sup>  |
|   |   |   | Porch Area:    | 8.05m <sup>2</sup>   |
| Minimum Lot Width:  | 14m   |   | Alfresco Area: | 15.79m <sup>2</sup>  |
| Minimum Lot Depth:  | 31m   |   | Total Area:    | 227.39m <sup>2</sup> |






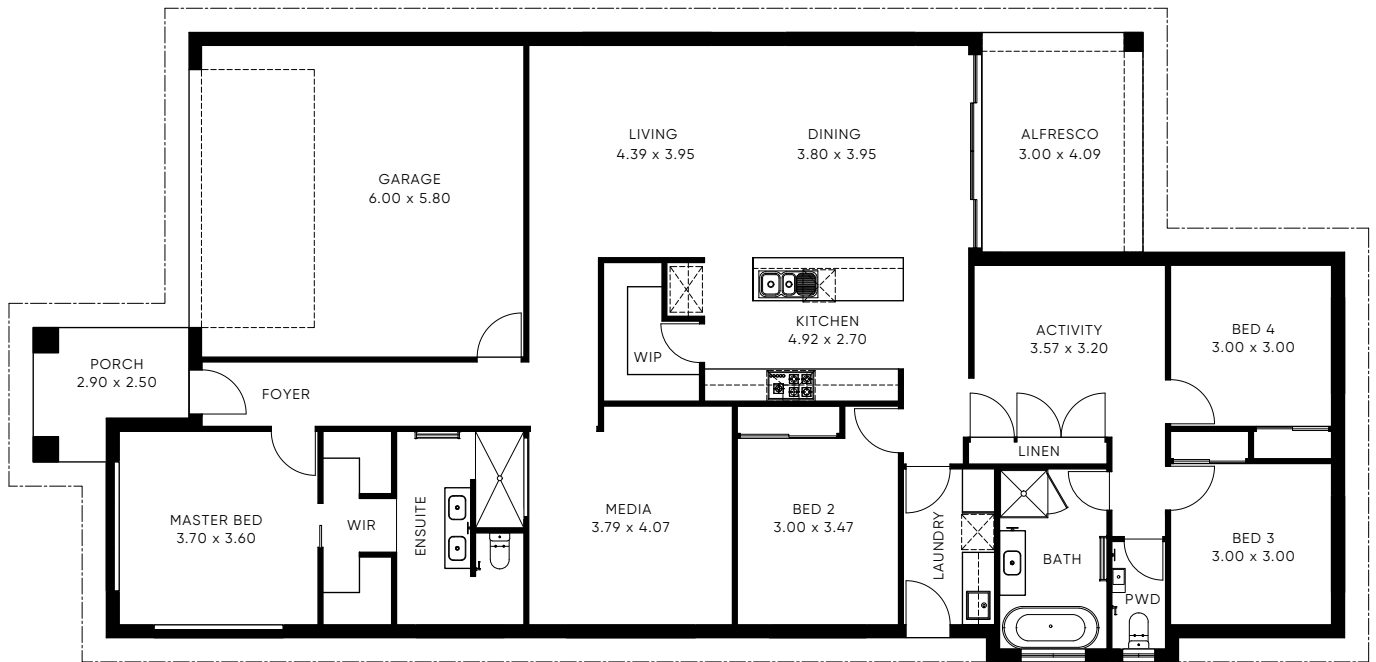
# THE OHANA 249

|   |   |   |                |                      |
|---|---|---|----------------|----------------------|
|  4 |  2.5 |  2 | Living Area:   | 179.17m <sup>2</sup> |
| <b>SINGLE STOREY</b>  |   |   | Garage Area:   | 38.88m <sup>2</sup>  |
|   |   |   | Porch Area:    | 9.49m <sup>2</sup>   |
| Minimum Lot Width:  | 15m   |   | Alfresco Area: | 22.15m <sup>2</sup>  |
| Minimum Lot Depth:  | 31m   |   | Total Area:    | 249.69m <sup>2</sup> |






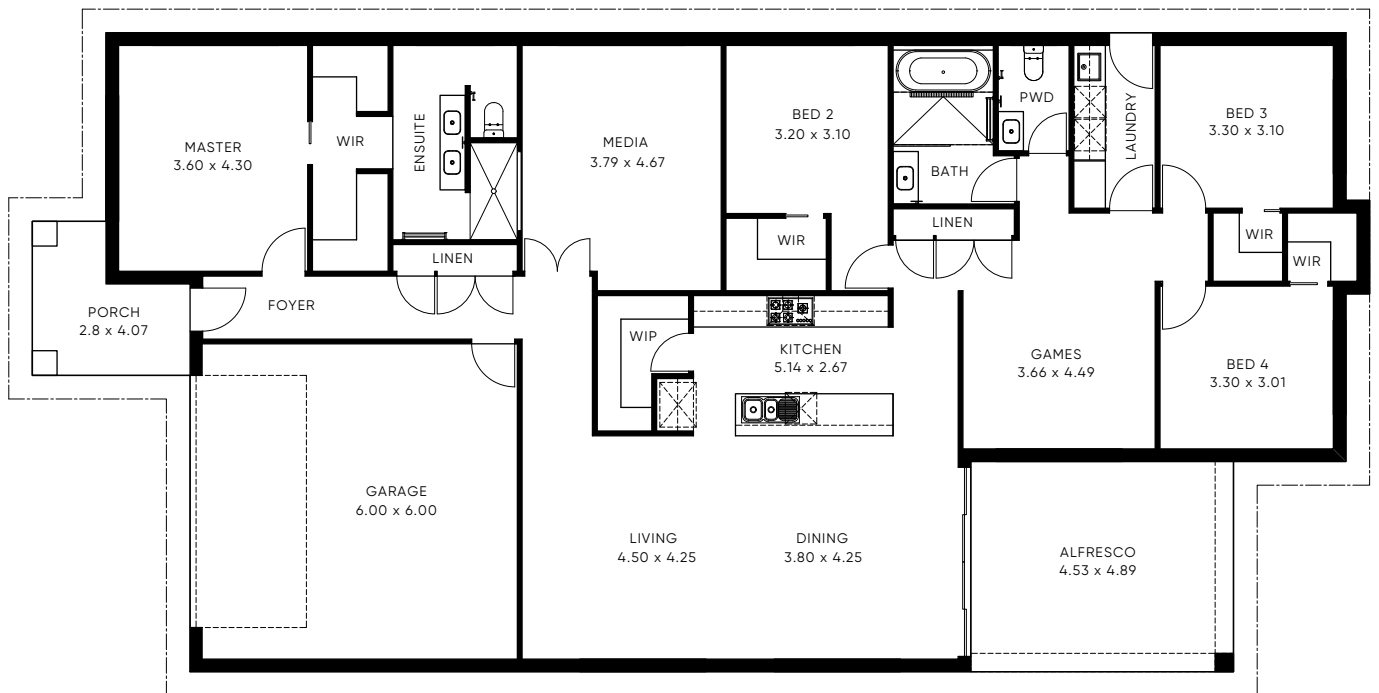
# THE NEWPORT 240

|   |   |   |                |                      |
|---|---|---|----------------|----------------------|
|  4 |  2.5 |  2 | Living Area:   | 184.75m <sup>2</sup> |
| <b>SINGLE STOREY</b>  |   |   | Garage Area:   | 37.62m <sup>2</sup>  |
|   |   |   | Porch Area:    | 6.00m <sup>2</sup>   |
| Minimum Lot Width:  | 14m   |   | Alfresco Area: | 12.27m <sup>2</sup>  |
| Minimum Lot Depth:  | 32.5m   |   | Total Area:    | 240.64m <sup>2</sup> |






# THE NEWPORT 274

|   |   |   |                |                      |
|---|---|---|----------------|----------------------|
|  4 |  2.5 |  2 | Living Area:   | 208.54m <sup>2</sup> |
| <b>SINGLE STOREY</b>  |   |   | Garage Area:   | 38.87m <sup>2</sup>  |
|   |   |   | Porch Area:    | 6.88m <sup>2</sup>   |
| Minimum Lot Width:  | 14.8m   |   | Alfresco Area: | 20.00m <sup>2</sup>  |
| Minimum Lot Depth:  | 33m   |   | Total Area:    | 274.29m <sup>2</sup> |








# THE AVOCA 268

|   |   |   |                |                      |
|---|---|---|----------------|----------------------|
|  4 |  2 |  2 | Living Area:   | 201.07m <sup>2</sup> |
| <b>SINGLE STOREY</b>  |   |   | Garage Area:   | 38.93m <sup>2</sup>  |
|   |   |   | Porch Area:    | 4.94m <sup>2</sup>   |
| Minimum Lot Width:  | 13.5m   |   | Alfresco Area: | 23.08m <sup>2</sup>  |
| Minimum Lot Depth:  | 31m   |   | Total Area:    | 268.02m <sup>2</sup> |






# THE AVOCA 292

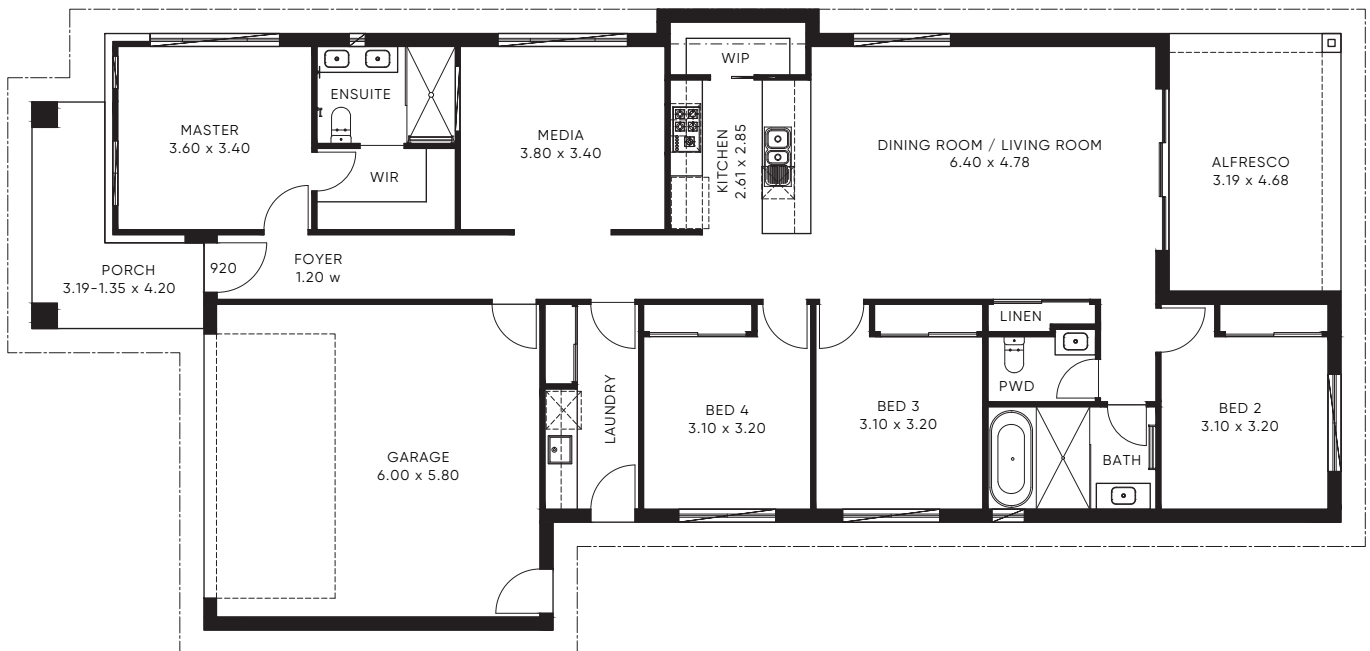
|   |   |   |                |                      |
|---|---|---|----------------|----------------------|
|  4 |  2 |  2 | Living Area:   | 215.43m <sup>2</sup> |
| <b>SINGLE STOREY</b>  |   |   | Garage Area:   | 38.88m <sup>2</sup>  |
|   |   |   | Porch Area:    | 5.67m <sup>2</sup>   |
| Minimum Lot Width:  | 17m   |   | Alfresco Area: | 32.59m <sup>2</sup>  |
| Minimum Lot Depth:  | 34m   |   | Total Area:    | 292.57m <sup>2</sup> |

ON DISPLAY AT WATERFORD






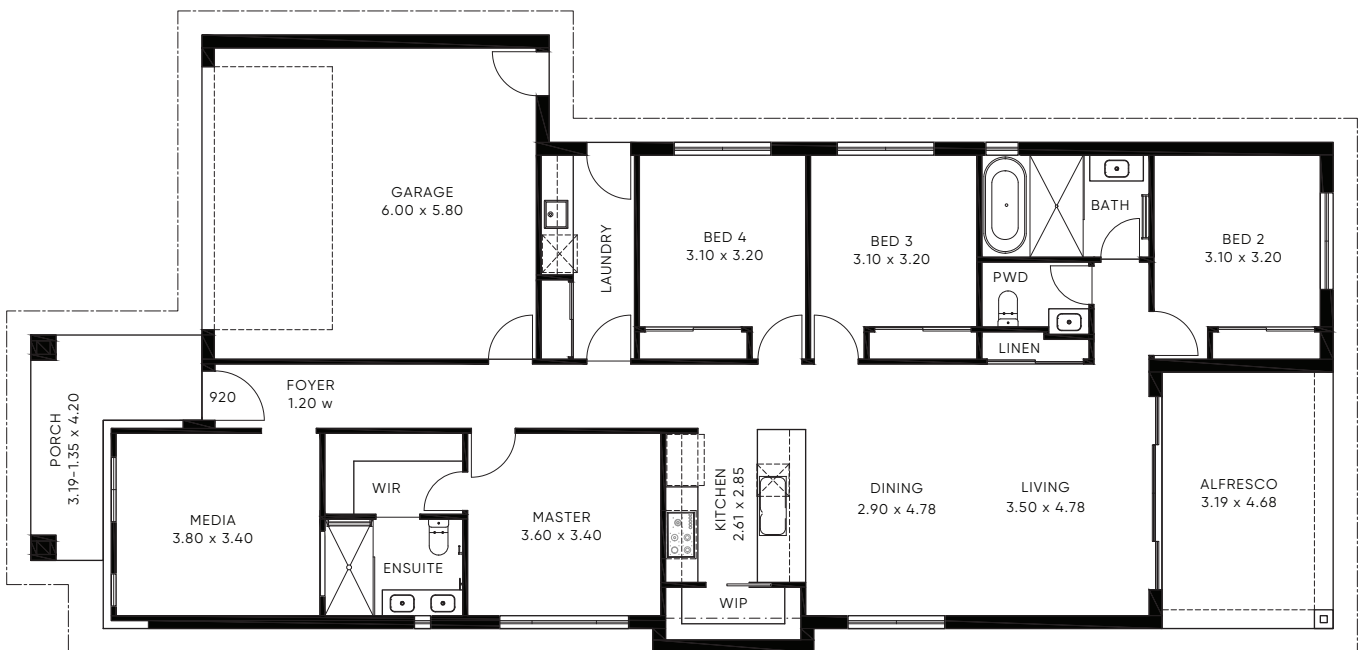
# THE BYRON 220-1

|   |   |   |                |                      |
|---|---|---|----------------|----------------------|
|  4 |  2.5 |  2 | Living Area:   | 159.05m <sup>2</sup> |
| <b>SINGLE STOREY</b>  |   |   | Garage Area:   | 38.10m <sup>2</sup>  |
|   |   |   | Porch Area:    | 8.38m <sup>2</sup>   |
| Minimum Lot Width:  | 13.5m   |   | Alfresco Area: | 15.25m <sup>2</sup>  |
| Minimum Lot Depth:  | 34m   |   | Total Area:    | 220.78m <sup>2</sup> |






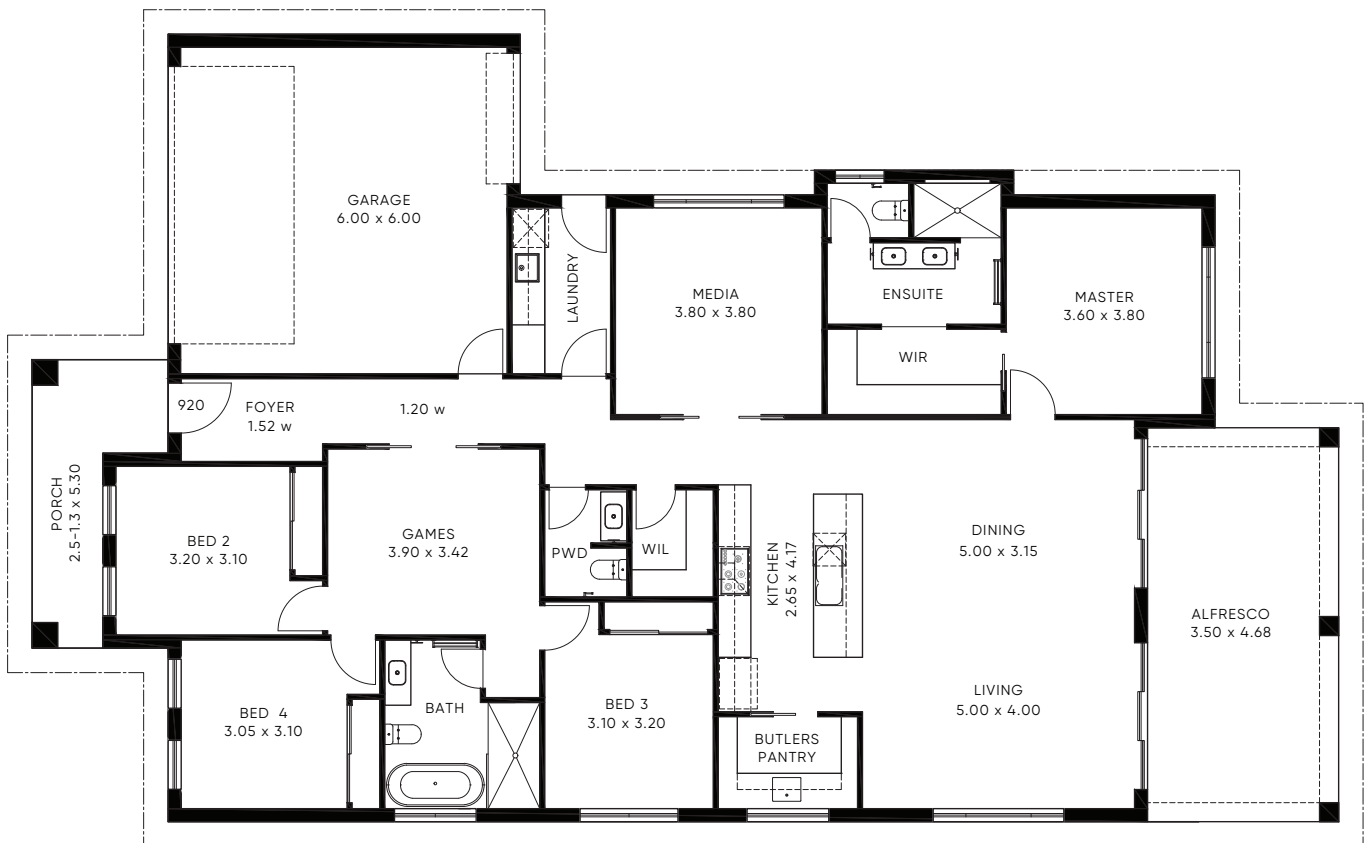
# THE BYRON 220-2

|   |   |   |                |                      |
|---|---|---|----------------|----------------------|
|  4 |  2.5 |  2 | Living Area:   | 159.05m <sup>2</sup> |
| <b>SINGLE STOREY</b>  |   |   | Garage Area:   | 38.10m <sup>2</sup>  |
|   |   |   | Porch Area:    | 8.38m <sup>2</sup>   |
| Minimum Lot Width:  | 13.5m   |   | Alfresco Area: | 15.25m <sup>2</sup>  |
| Minimum Lot Depth:  | 34m   |   | Total Area:    | 220.78m <sup>2</sup> |






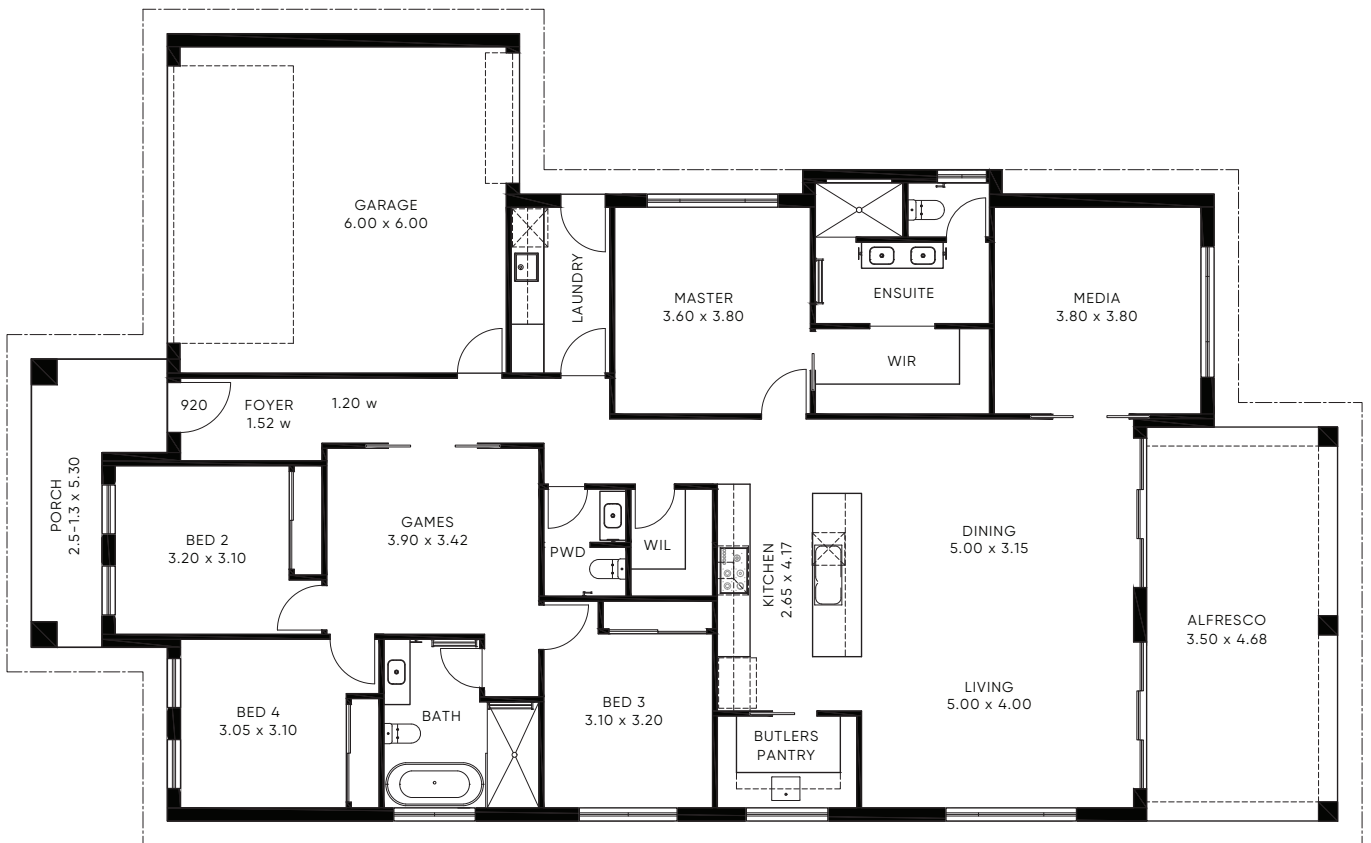
# THE BOWRAL 271-1

|   |   |   |                |                      |
|---|---|---|----------------|----------------------|
|  4 |  2.5 |  2 | Living Area:   | 197.91m <sup>2</sup> |
| <b>SINGLE STOREY</b>  |   |   | Garage Area:   | 39.59m <sup>2</sup>  |
|   |   |   | Porch Area:    | 8.95m <sup>2</sup>   |
| Minimum Lot Width:  | 16.5m   |   | Alfresco Area: | 25.41m <sup>2</sup>  |
| Minimum Lot Depth:  | 34m   |   | Total Area:    | 271.86m <sup>2</sup> |






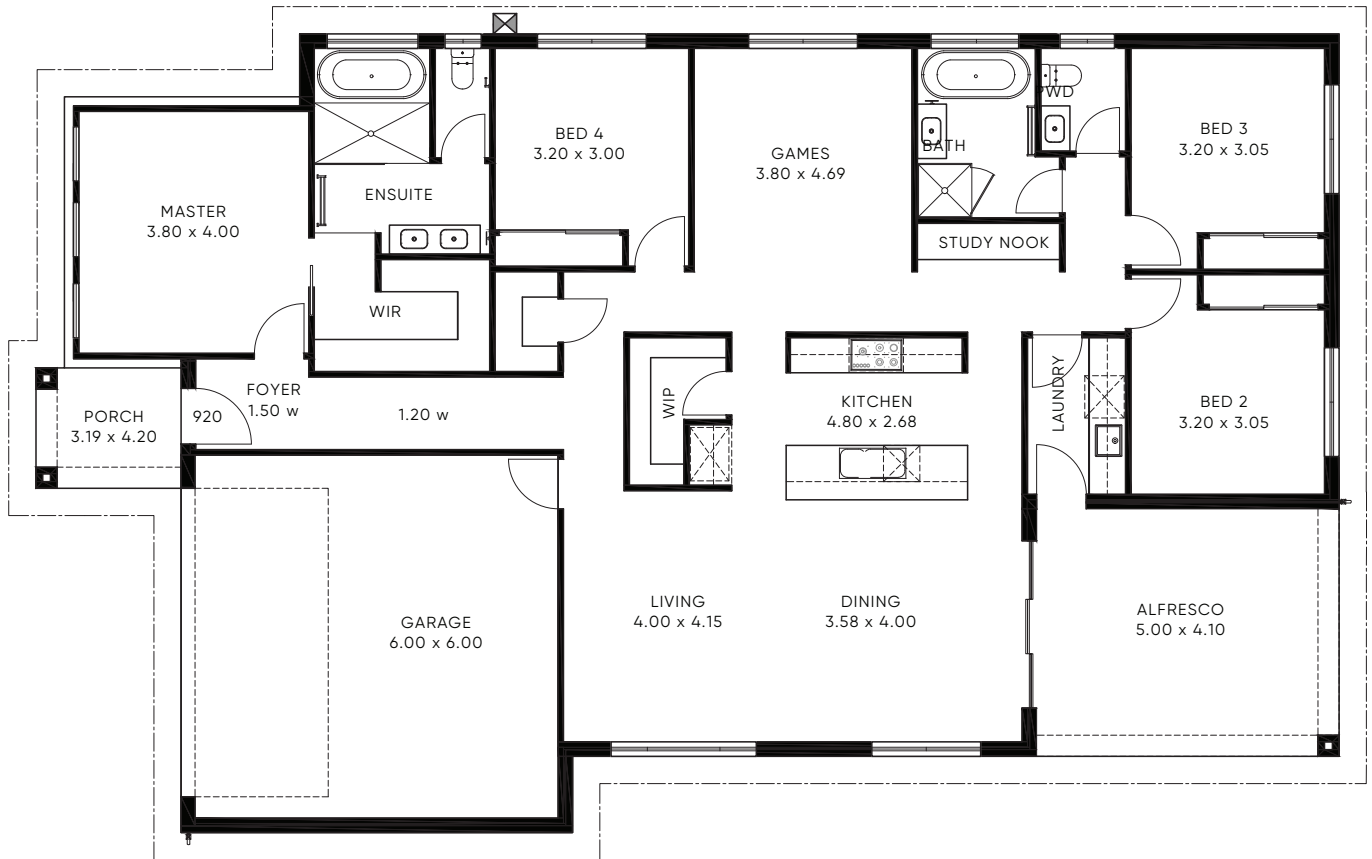
# THE BOWRAL 271-2

|   |   |   |                |                      |
|---|---|---|----------------|----------------------|
|  4 |  2.5 |  2 | Living Area:   | 197.91m <sup>2</sup> |
| <b>SINGLE STOREY</b>  |   |   | Garage Area:   | 39.59m <sup>2</sup>  |
|   |   |   | Porch Area:    | 8.95m <sup>2</sup>   |
| Minimum Lot Width:  | 16.5m   |   | Alfresco Area: | 25.41m <sup>2</sup>  |
| Minimum Lot Depth:  | 34m   |   | Total Area:    | 271.86m <sup>2</sup> |






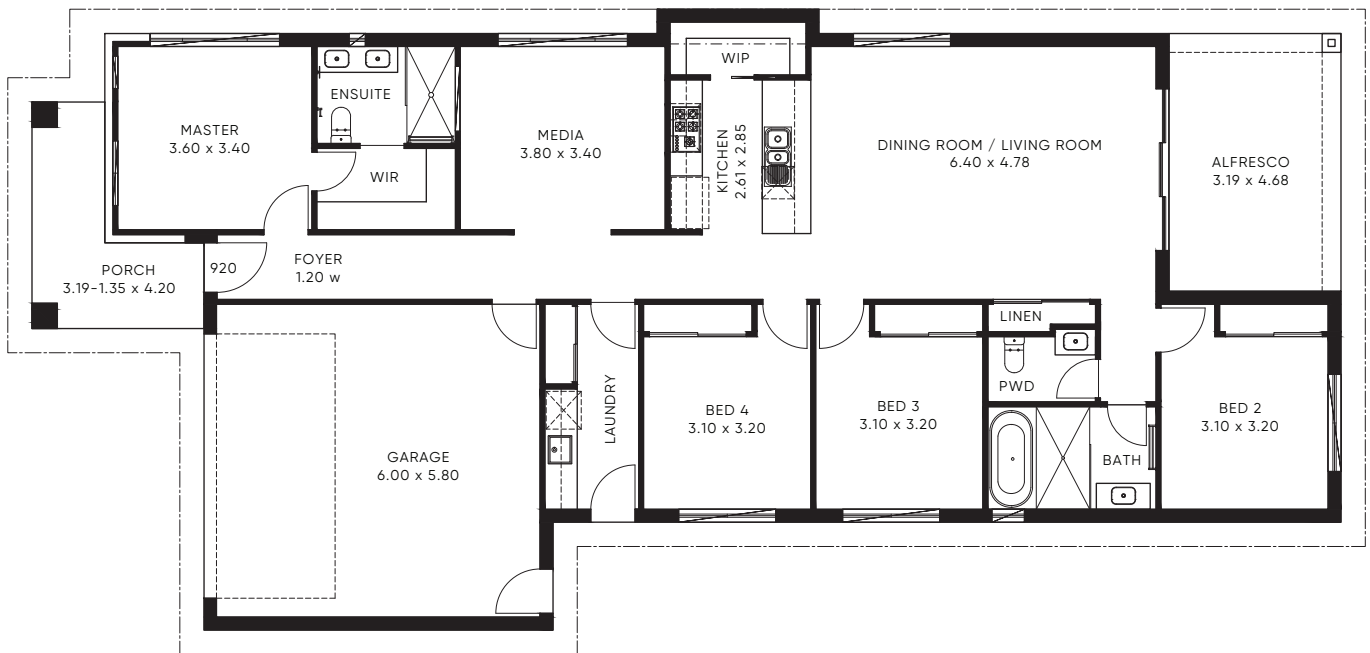
# THE BUXTON 248-1

|   |   |   |                |                      |
|---|---|---|----------------|----------------------|
|  4 |  2.5 |  2 | Living Area:   | 183.66m <sup>2</sup> |
| <b>SINGLE STOREY</b>  |   |   | Garage Area:   | 39.17m <sup>2</sup>  |
|   |   |   | Porch Area:    | 4.77m <sup>2</sup>   |
| Minimum Lot Width:  | 15.2m   |   | Alfresco Area: | 20.45m <sup>2</sup>  |
| Minimum Lot Depth:  | 32m   |   | Total Area:    | 248.05m <sup>2</sup> |






# THE BYRON 220-1

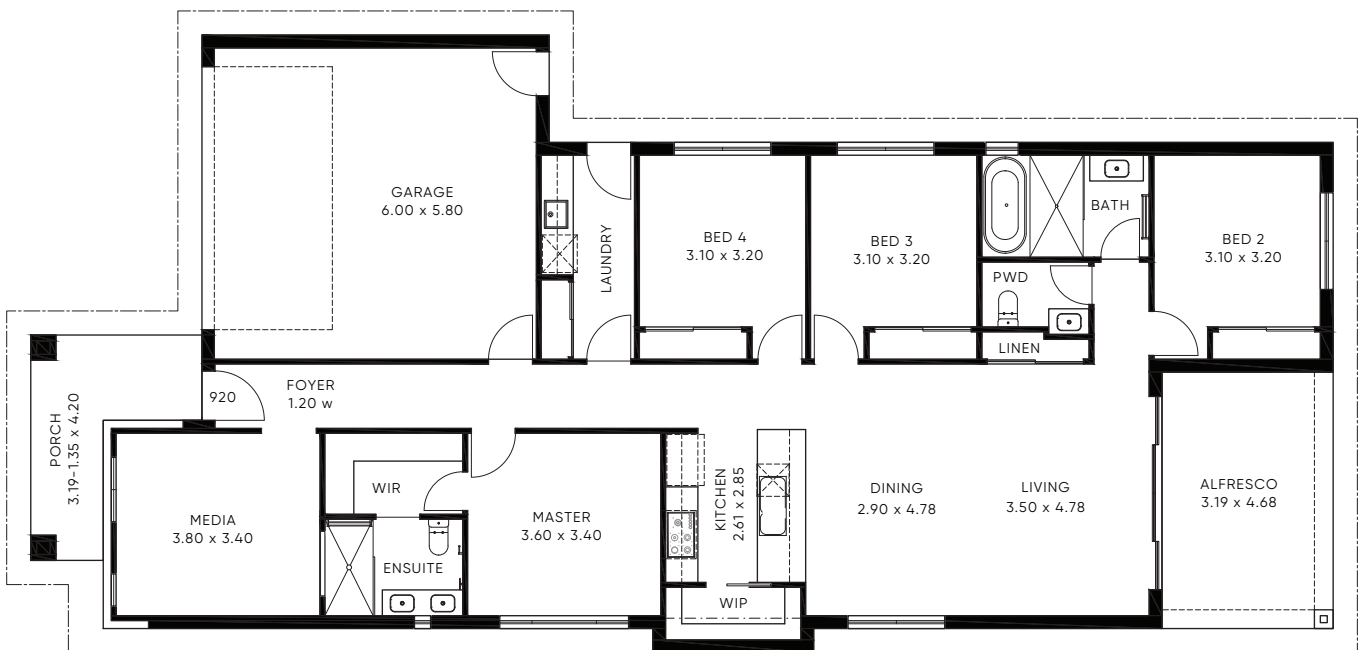
|   |   |   |                |                      |
|---|---|---|----------------|----------------------|
|  4 |  2.5 |  2 | Living Area:   | 159.05m <sup>2</sup> |
| <b>SINGLE STOREY</b>  |   |   | Garage Area:   | 38.10m <sup>2</sup>  |
|   |   |   | Porch Area:    | 8.38m <sup>2</sup>   |
| Minimum Lot Width:  | 13.5m   |   | Alfresco Area: | 15.25m <sup>2</sup>  |
| Minimum Lot Depth:  | 34m   |   | Total Area:    | 220.78m <sup>2</sup> |








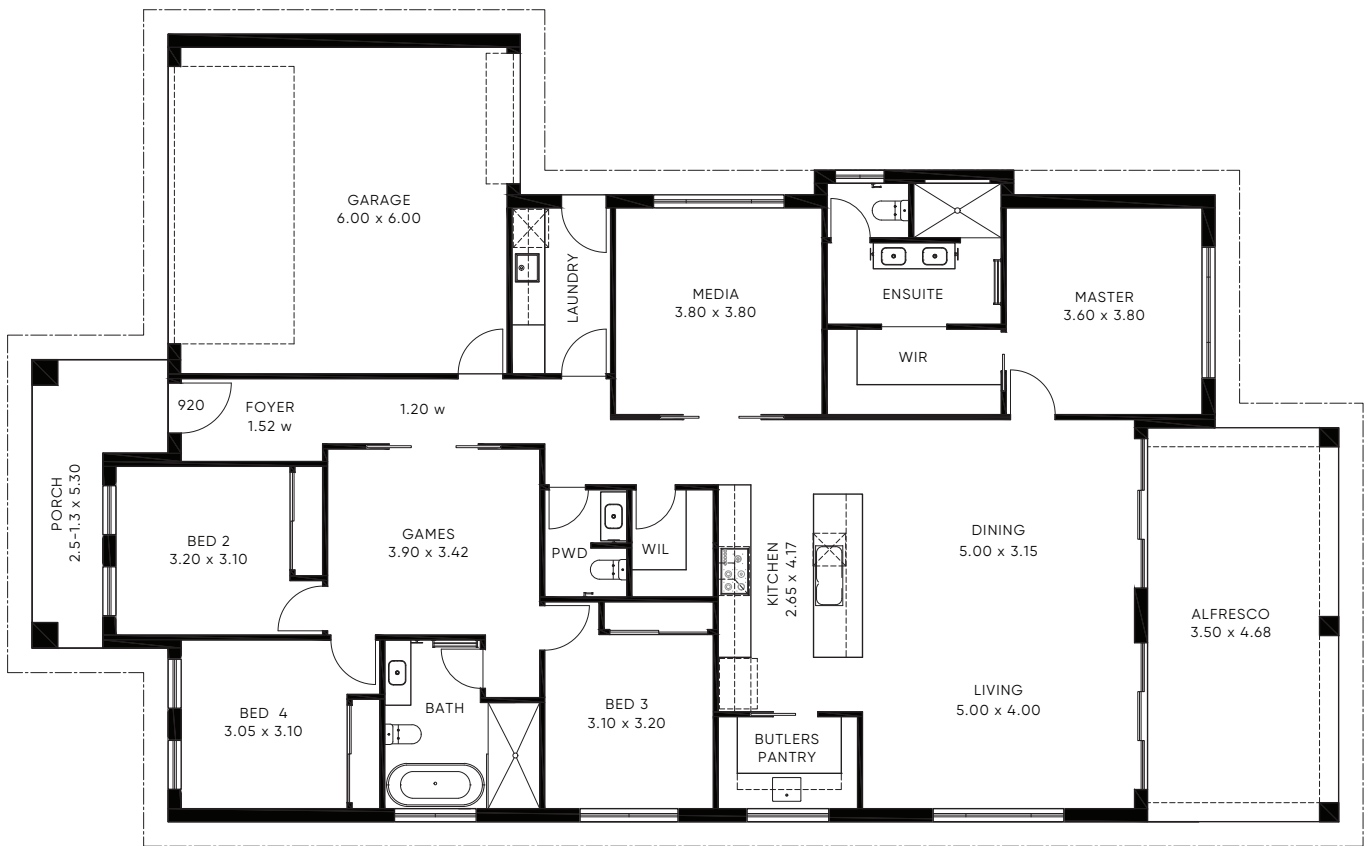
# THE BYRON 220-2

|   |   |   |                |                      |
|---|---|---|----------------|----------------------|
|  4 |  2.5 |  2 | Living Area:   | 159.05m <sup>2</sup> |
| <b>SINGLE STOREY</b>  |   |   | Garage Area:   | 38.10m <sup>2</sup>  |
|   |   |   | Porch Area:    | 8.38m <sup>2</sup>   |
| Minimum Lot Width:  | 13.5m   |   | Alfresco Area: | 15.25m <sup>2</sup>  |
| Minimum Lot Depth:  | 34m   |   | Total Area:    | 220.78m <sup>2</sup> |






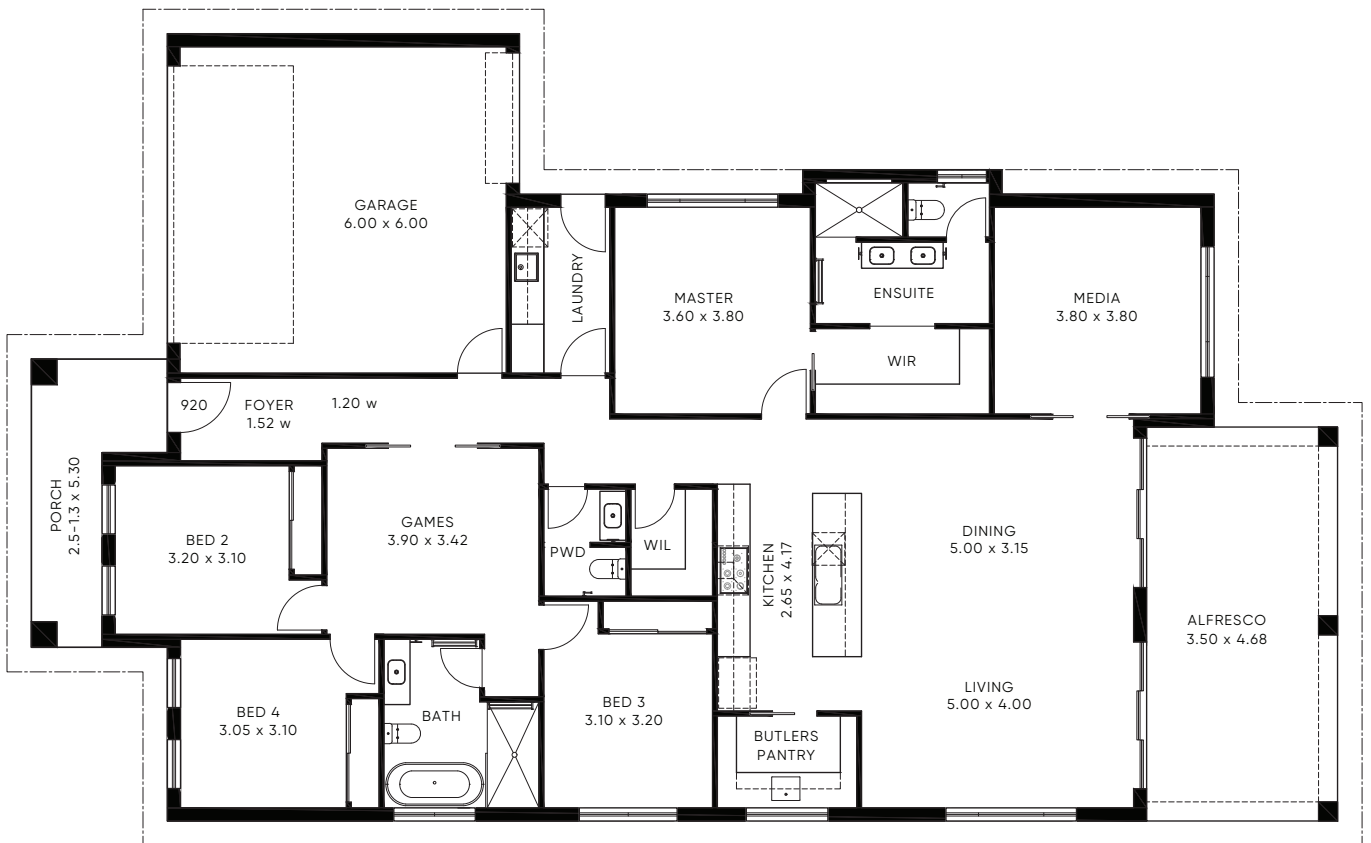
# THE BOWRAL 271-1

|   |   |   |                |                      |
|---|---|---|----------------|----------------------|
|  4 |  2.5 |  2 | Living Area:   | 197.91m <sup>2</sup> |
| <b>SINGLE STOREY</b>  |   |   | Garage Area:   | 39.59m <sup>2</sup>  |
|   |   |   | Porch Area:    | 8.95m <sup>2</sup>   |
| Minimum Lot Width:  | 16.5m   |   | Alfresco Area: | 25.41m <sup>2</sup>  |
| Minimum Lot Depth:  | 34m   |   | Total Area:    | 271.86m <sup>2</sup> |






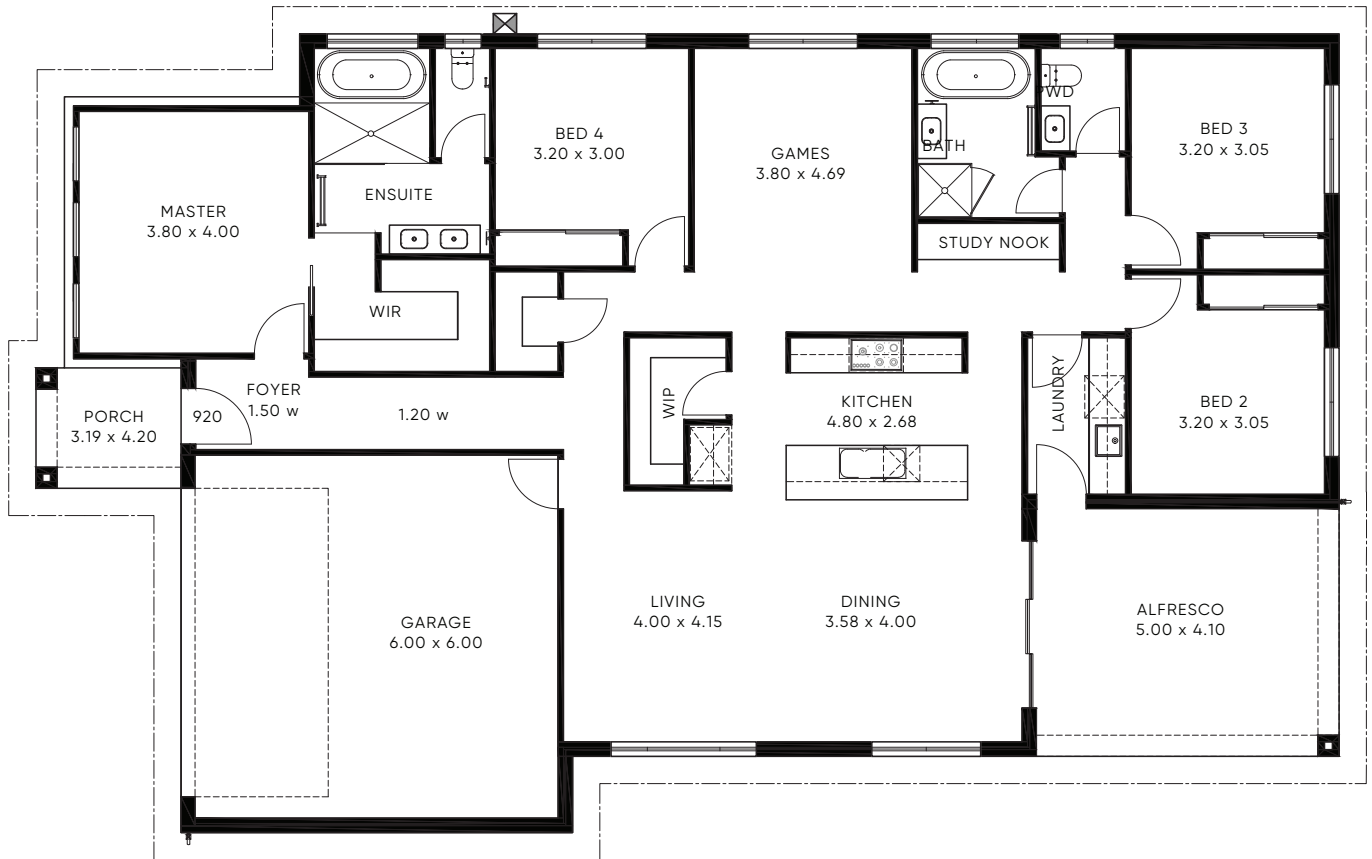
# THE BOWRAL 271-2

|   |   |   |                |                      |
|---|---|---|----------------|----------------------|
|  4 |  2.5 |  2 | Living Area:   | 197.91m <sup>2</sup> |
| <b>SINGLE STOREY</b>  |   |   | Garage Area:   | 39.59m <sup>2</sup>  |
|   |   |   | Porch Area:    | 8.95m <sup>2</sup>   |
| Minimum Lot Width:  | 16.5m   |   | Alfresco Area: | 25.41m <sup>2</sup>  |
| Minimum Lot Depth:  | 34m   |   | Total Area:    | 271.86m <sup>2</sup> |





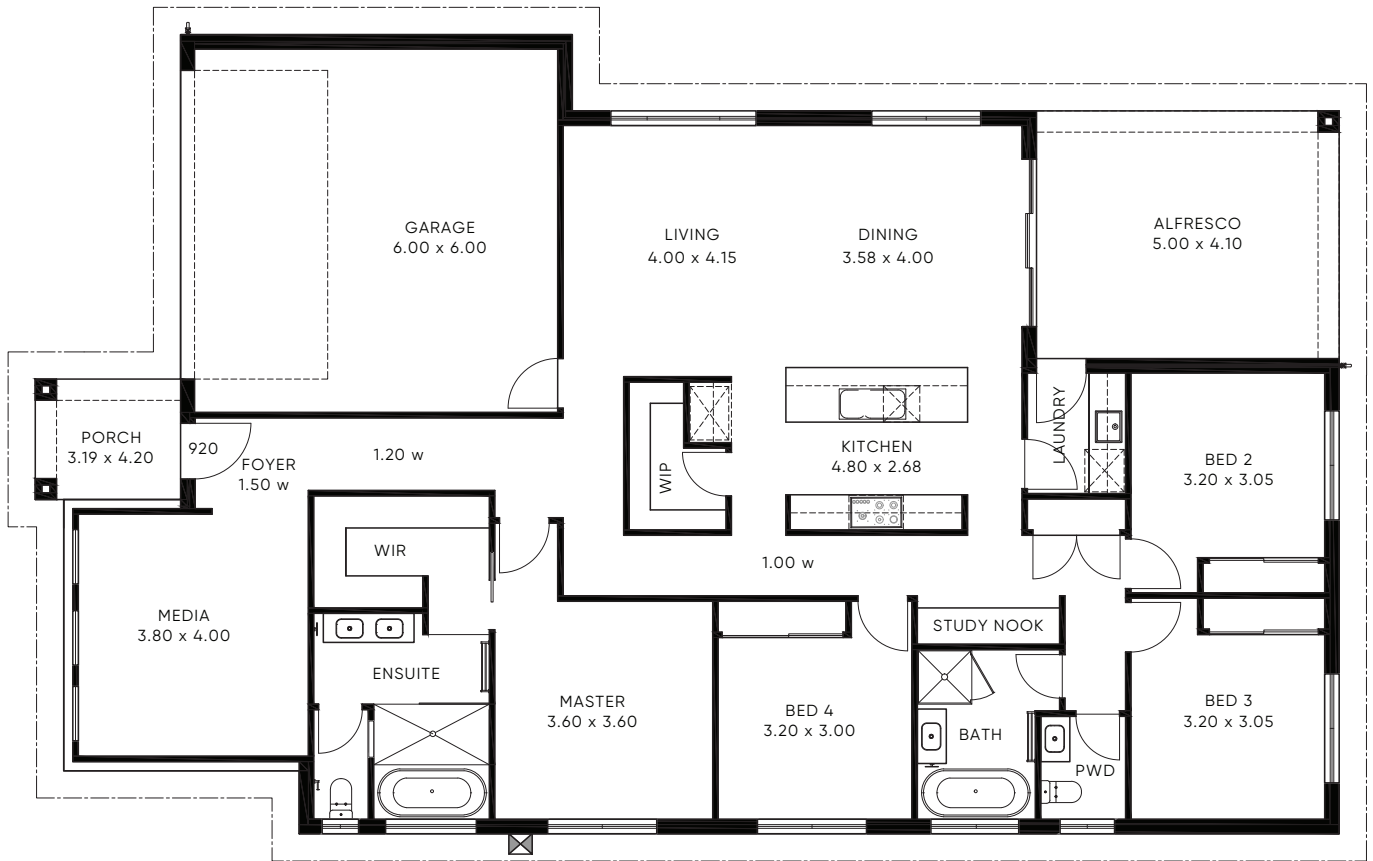
# THE BUXTON 248-1

|   |   |   |                |                      |
|---|---|---|----------------|----------------------|
|  4 |  2.5 |  2 | Living Area:   | 183.66m <sup>2</sup> |
| <b>SINGLE STOREY</b>  |   |   | Garage Area:   | 39.17m <sup>2</sup>  |
|   |   |   | Porch Area:    | 4.77m <sup>2</sup>   |
| Minimum Lot Width:  | 15.2m   |   | Alfresco Area: | 20.45m <sup>2</sup>  |
| Minimum Lot Depth:  | 32m   |   | Total Area:    | 248.05m <sup>2</sup> |



# THE BUXTON 248-2

|   |   |   |                |                      |
|---|---|---|----------------|----------------------|
|  4 |  2.5 |  2 | Living Area:   | 183.66m <sup>2</sup> |
| <b>SINGLE STOREY</b>  |   |   | Garage Area:   | 39.17m <sup>2</sup>  |
|   |   |   | Porch Area:    | 4.77m <sup>2</sup>   |
| Minimum Lot Width:  | 15.2m   |   | Alfresco Area: | 20.45m <sup>2</sup>  |
| Minimum Lot Depth:  | 32m   |   | Total Area:    | 248.05m <sup>2</sup> |





Classic



Country



Urban



Contemporary



Hamptons



Coastal



City



LOVE  
YOUR  
HOME

# LOVE YOUR HOME

**(02) 4044 1900**

**HEAD OFFICE + HOME STUDIO**

4/4 Edge Street, Boolaroo 2284

**WATERFORD DISPLAYS**

54 Settlers Boulevard, Chisholm 2322

**HUNTLEE DISPLAY**

14 Peachy Avenue, North Rothbury 2335

CANDORHOMES.COM.AU

**CANDOR** *Homes*

DISCLAIMER: all information contained in this brochure should be used as a guide only. Please contact your Candor Homes Consultant for full details. ©Designs are protected by current copyright law under the Copyright Act 1968 (CTH) and moral rights under the Copyright Amendment (Moral Rights) Acts 2000 (CTH). Reproduction of these designs in any form is illegal.