



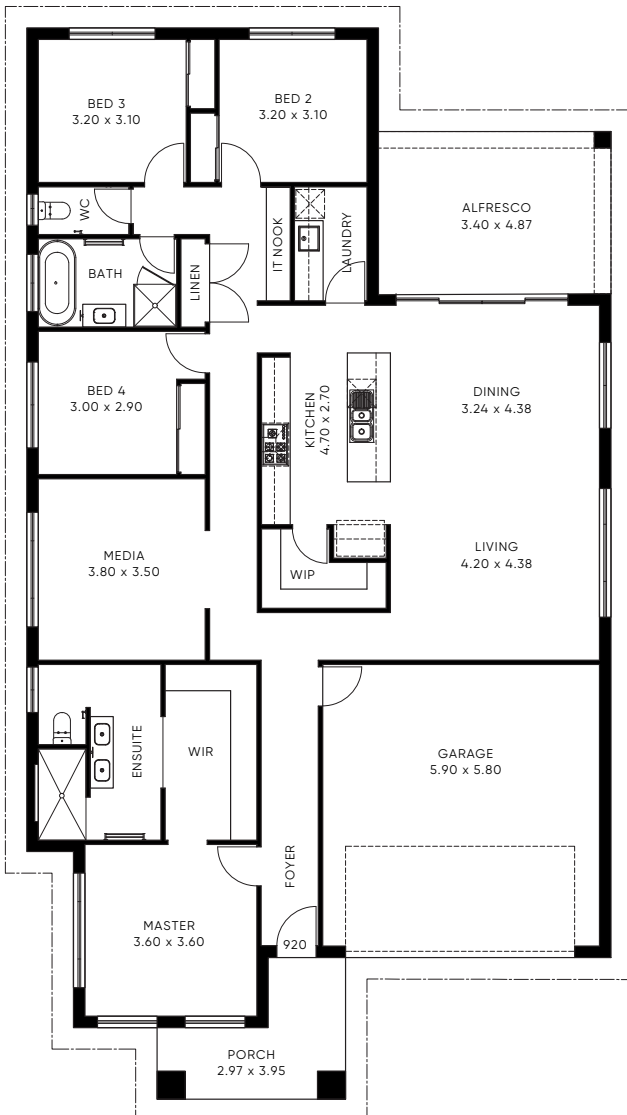


HOUSE	240M2	+	LAND	528M2
 4	 2		 2	 2

FROM **\$859,360**



HOUSE + LAND

PACKAGE INCLUSIONS

- ✓ White Series Inclusions Package
- ✓ Ducted air-conditioning
- ✓ Full flooring package
- ✓ Upgraded 900 stainless steel appliances to kitchen
- ✓ Upgraded electrical package including down lights to every room
- ✓ 920mm wide front door
- ✓ Window coverings
- ✓ Covered alfresco & concrete slab
- ✓ Colorbond roof
- ✓ Driveway
- ✓ Haymes 3 coat paint system
- ✓ Site costs & basix

+ LANDSCAPING UPGRADE AVAILABLE

(02) 4044 1900
info@candorhomes.com.au
CANDORHOMES.COM.AU

*All information contained in this flyer should be used as a guide only. Please contact your Candor Homes consultant for full details.