





The BLANEY 60

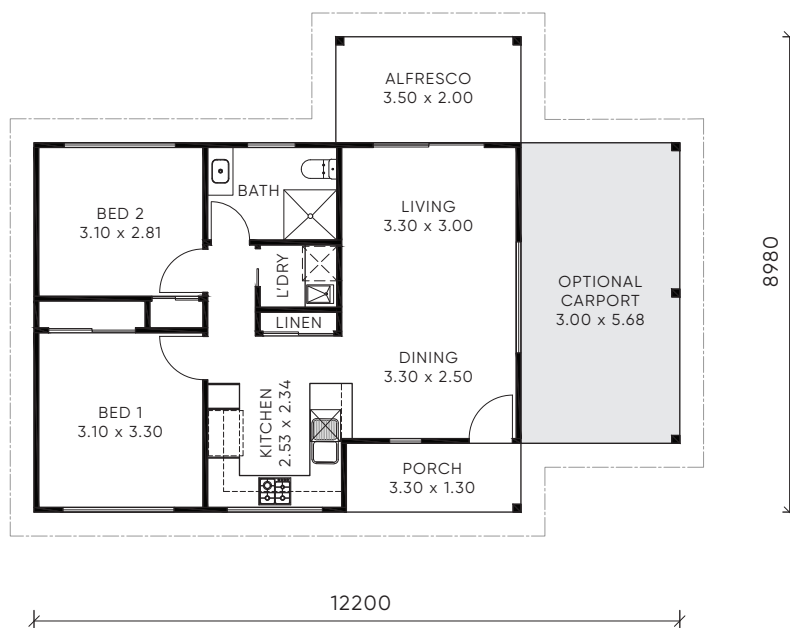
| | | | |
|---------------|--|--|--|
| + GRANNY FLAT | | | |
|---------------|--|--|--|

| | |
|-------------|---|
| BLOCK WIDTH | - |
|-------------|---|

| | |
|------------|---------------------|
| LIVING | 59.91m ² |
| GARAGE | 17.04m ² |
| PORCH | 4.29m ² |
| ALFRESCO | 7.00m ² |
| TOTAL AREA | 60.10m ² |

| | | | |
|---|---|---|---|
|  |  |  |  |
| 2 | 1 | 1 | 1 |

| | |
|-------------|--------|
| HOUSE WIDTH | 12.20m |
| HOUSE DEPTH | 8.98m |



SMART INVESTMENT

Why not take your new home build to the next level with a thoughtful addition of a designer granny flat? It's a smart, value adding investment that offers both practicality and long-term benefits.

The LEETON 60

+ GRANNY FLAT

BLOCK WIDTH

16.5m+

LIVING

59.94m²

GARAGE

16.50m²

PORCH

6.85m²

ALFRESCO

-

TOTAL AREA

60.10m²



2



1



1



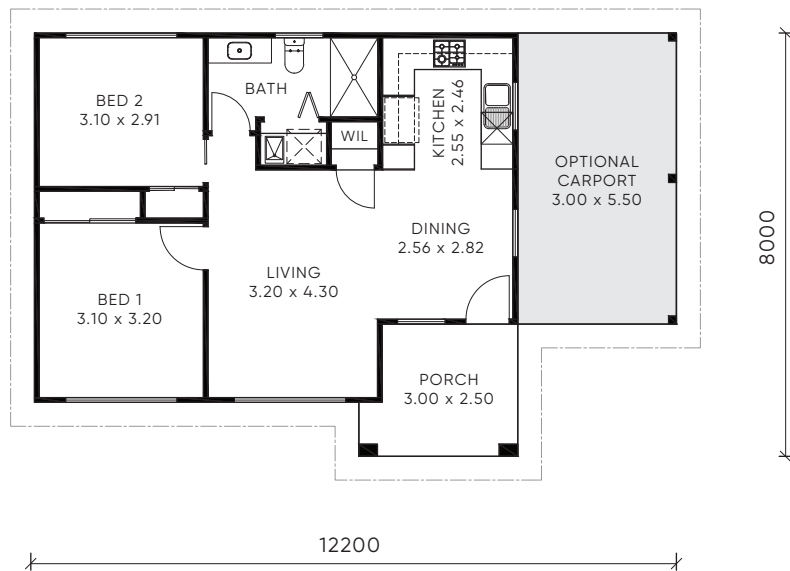
1

HOUSE WIDTH

12.20m

HOUSE DEPTH

8.00m



FLEXIBLE SOLUTIONS

Whether you're accommodating extended family, creating a private retreat, or generating rental income, a granny flat enhances your property's space and flexibility without compromising the main home's design.